

FACT SHEET

# Cre8tive MRO Solution

## ERP + MRO SOLUTION FOR AEROSPACE + DEFENSE INDUSTRY

Working for an Aerospace and Defense Company processing Maintenance, Repair, and Overhaul (MRO) means you are always on the lookout for production changes, hard deadlines, and the tight budgets that accompany Maintenance, Repair, and Overhaul as a business. Constant changes must be met by new and improved business tools and processes that keep your business's costs down as well as improving efficiency. At Cre8tive Technology and Design (CTND) we offer an MRO solution that can be adapted to any business structure. We deliver products and services that promise both high performance and scalability by focusing on stable deployment and a positive user experience.

Epicor A&D MRO is a global ERP solution that is designed to meet the specific needs of this industry. User-friendly software means you can count on robust product data management solutions that also ensure you can meet strict product and audit requirements that are essential to A&D MRO. Our software solutions also support compliance process requirements for better Quality Management alongside full company support that allows the business to maximize productivity and collaboration through managed workflows. The bottom line is this: CTND offers lean strategies that help you improve your lead times and reduce waste, making your company's MRO process more efficient and sustainable than ever before.

Cre8tive Technology has partnered with Aerospace & Defense companies to help streamline their operations and meet strict operational and industry compliance requirements. We developed a MRO solution that works directly with a global ERP solution designed for manufacturers. The solution goes beyond traditional ERP to provide product, project and contract management, CRM, SCM, service management, backed by comprehensive fiscal management in support of an increasingly regulated sector.

## A & D Capabilities

- **Contract Maintenance:** A way to assign a contract ID that doesn't have an impact on MPR, can be used with or without a Project
- **Contract Flowdown:** Flowdown of critical information from the contract to the sales order to the supply, including all hard-pegged Bill of Materials (BOM) levels
- **Clause Maintenance:** Ability to enter quality, certification, contract and other clause types into the system for use in contract, sales order, purchase order, and certification documents
- **Shelf Life:** A dashboard for review of expiring materials, as well as the ability to set a horizon for material issue and purchase order receipt, ensuring materials received or consumed have an adequate use window.
- **Export Compliance:** Enter an import or export license into the system for us in sales order and shipping.
- **Revision in Inventory:** While not respected by Materials Requirement Planning (MRP), it does track revision in inventory for as-built reporting, and compares the revision being shipped to the sales order, and will not ship an incorrect revision. Also warns on receipt of a different revision as compared to the purchase order.
- **As-Built:** A dashboard showing the full build as traced through the system.

## MRO Capabilities

- **Part Specified Lot Attributes:** Attributes that are created by the site, for tracking in inventory or for certification
- **Manual Control:** Ability to input, maintain revisions and organize associated task contained including both operations and associated materials to multiple levels.
- **Workscope Maintenance:** A method and tool to organize various work instruction sets into custom groups allowing for rapid job creation using controlled and approved information. Workscopes can be defined with required controls to auto-filter only permitted operations based on configuration.
- **Disassembly:** Creates separate jobs for components of a parent assembly that will be reassembled after all component repairs are completed.
- **Additional Repair:** After a repair plan is set, if rework or additional unplanned repair is required, can be added in a way that collects the costs as part of the parent job, and the repaired materials return to the parent job. Supports traceability for certificate generation.
- **Induction Process:** Ability to go directly from the receipt process to an approved job complete with sales/purchase order details providing instant revenue potential and shop visibility simply upon receipt.
- **Certification Generation:** Capability to generate multiple certifications automatically using job data including 8130, EASA, JCAB and CAAC during certification process producing standardized certs while streamlining process.
- **Certificate of Conformance:** A generic Certificate of Conformance (C of C) format is available from Customer shipment entry. Able to select which Pack Lines require C of C, or print for all lines.

# OUR MRO SOLUTION FOR AEROSPACE + DEFENSE INDUSTRY

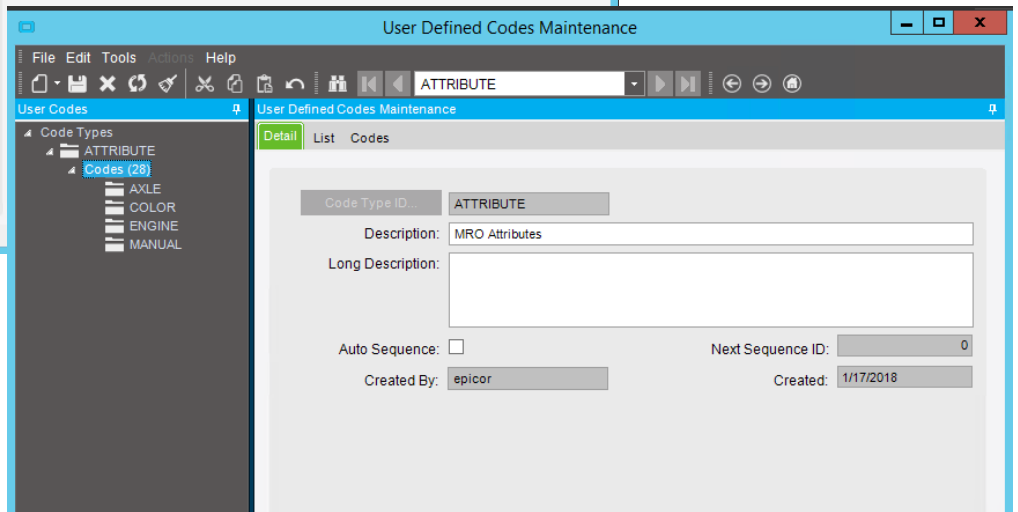
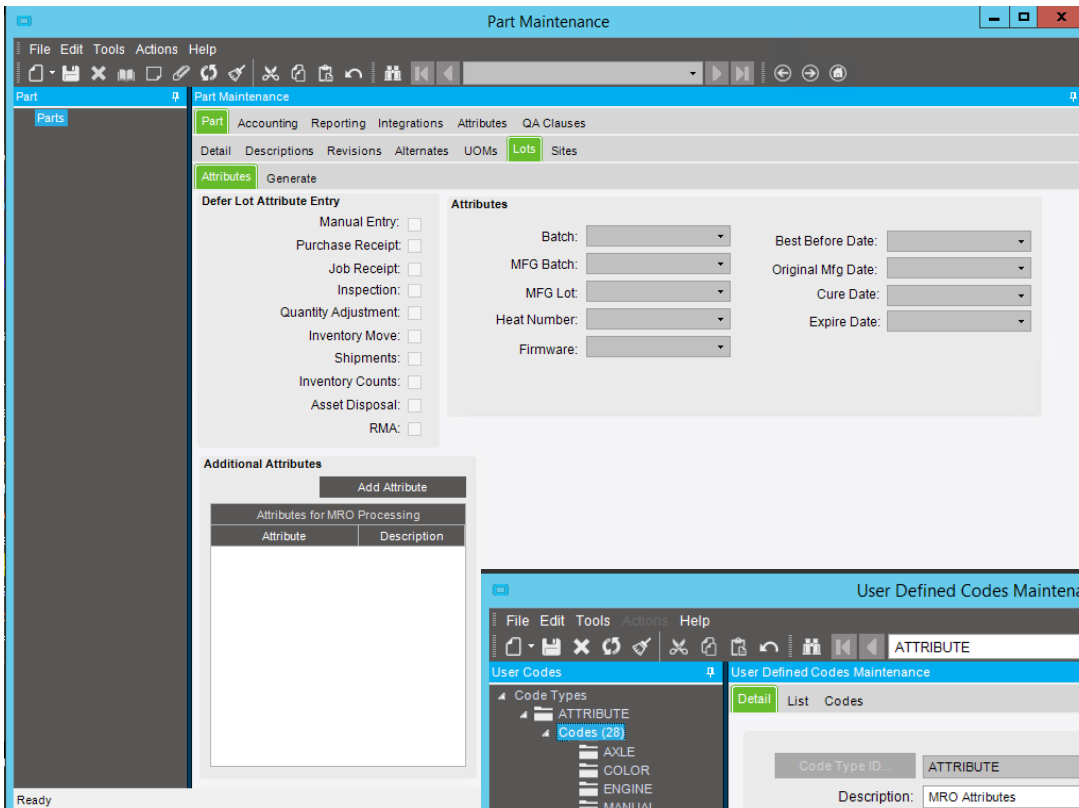
## MRO as a business model has certain requirements:

- Ability to define what Attributes are critical for definition
- Ability to receive Customer owned material into stock or directly onto a job
- Use of pre-approved engineering for repair or overhaul, with engineering further controlled by Customer, Part, or other attributes as required.
- A system for adding repair or overhaul routings to the job after incoming inspection has been completed, that minimizes the possibility of error, supports traceability and minimizes costs.
- Ability to generate a quote or sales order based on the estimated cost of the specific repair or overhaul being performed, plus markup

# OUR MRO SOLUTION FOR AEROSPACE + DEFENSE INDUSTRY

## Dynamic Attributes

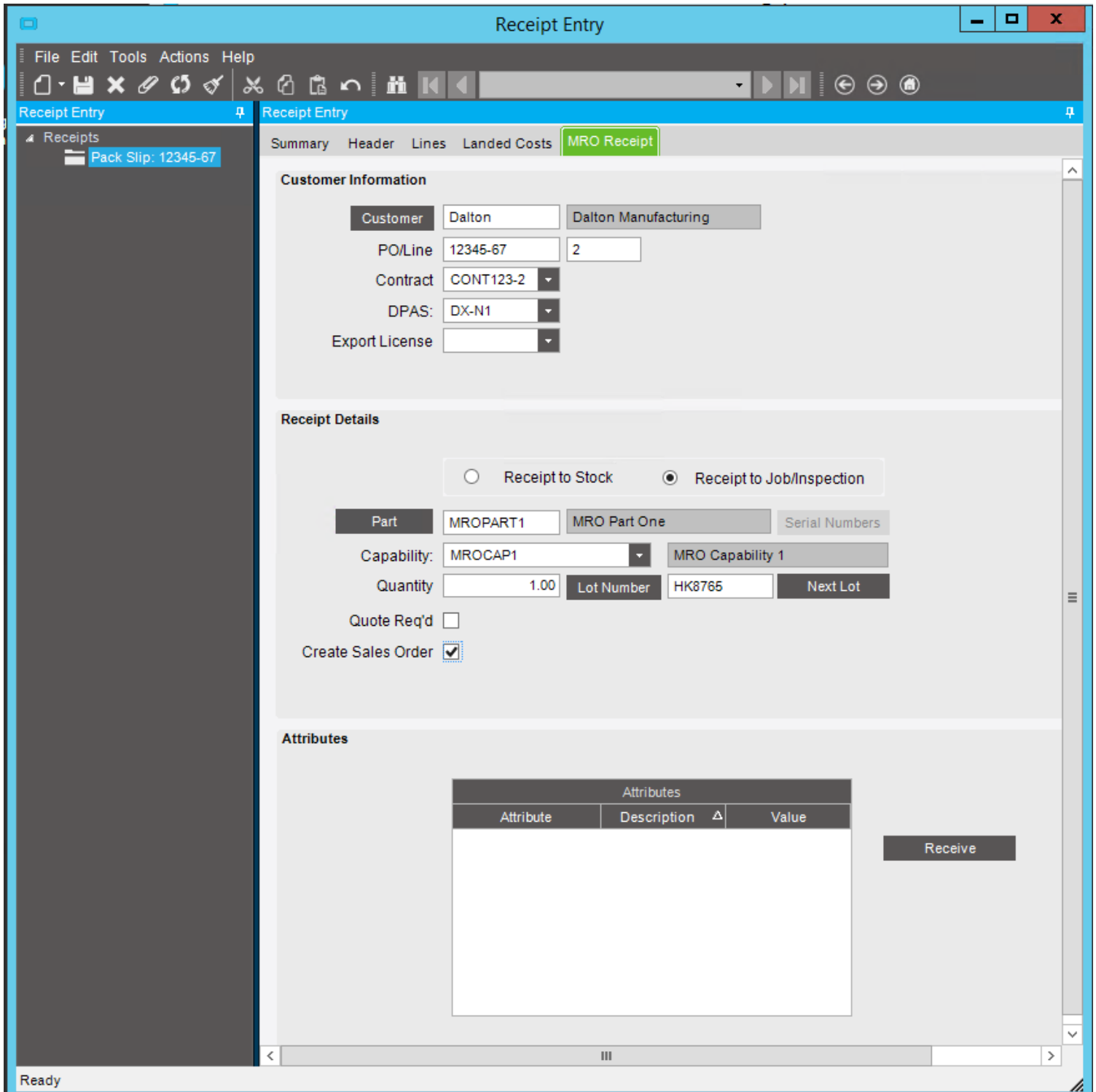
- Attributes can be created to fit your Business Model requirements. Attributes such as Manual, MRO Part Type or other value are required to manage availability of engineering data. Attributes in Inventory allow for better control and reporting.



## OUR MRO SOLUTION FOR AEROSPACE + DEFENSE INDUSTRY

### Customer Owned Material

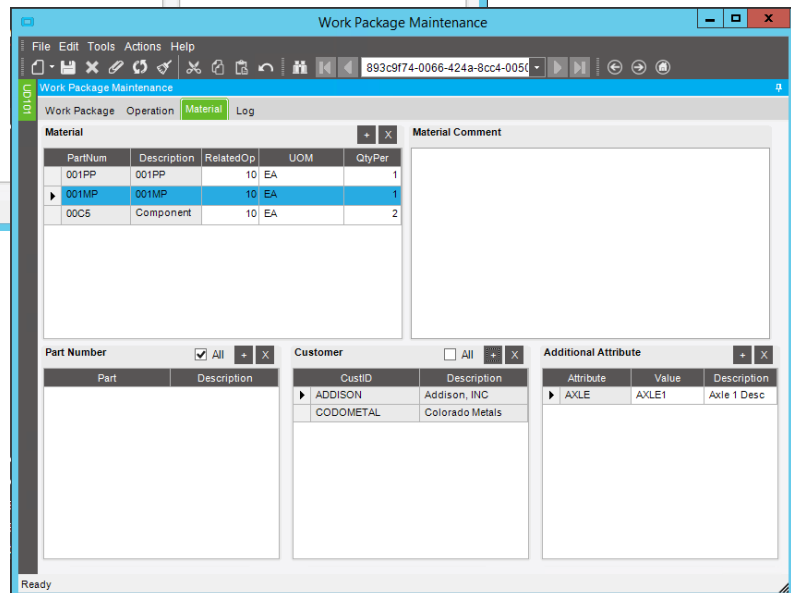
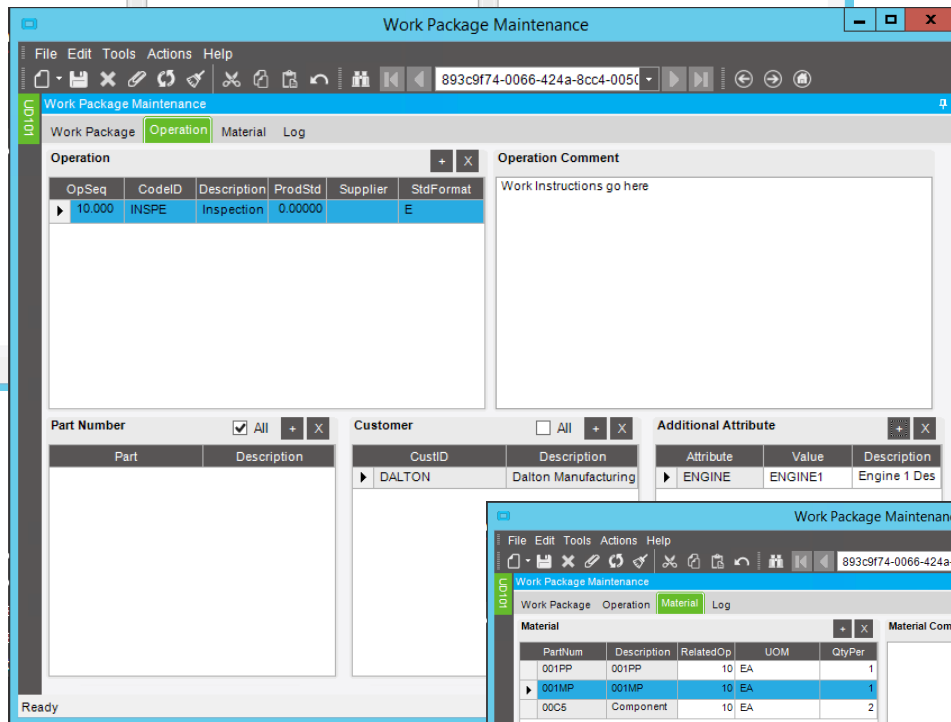
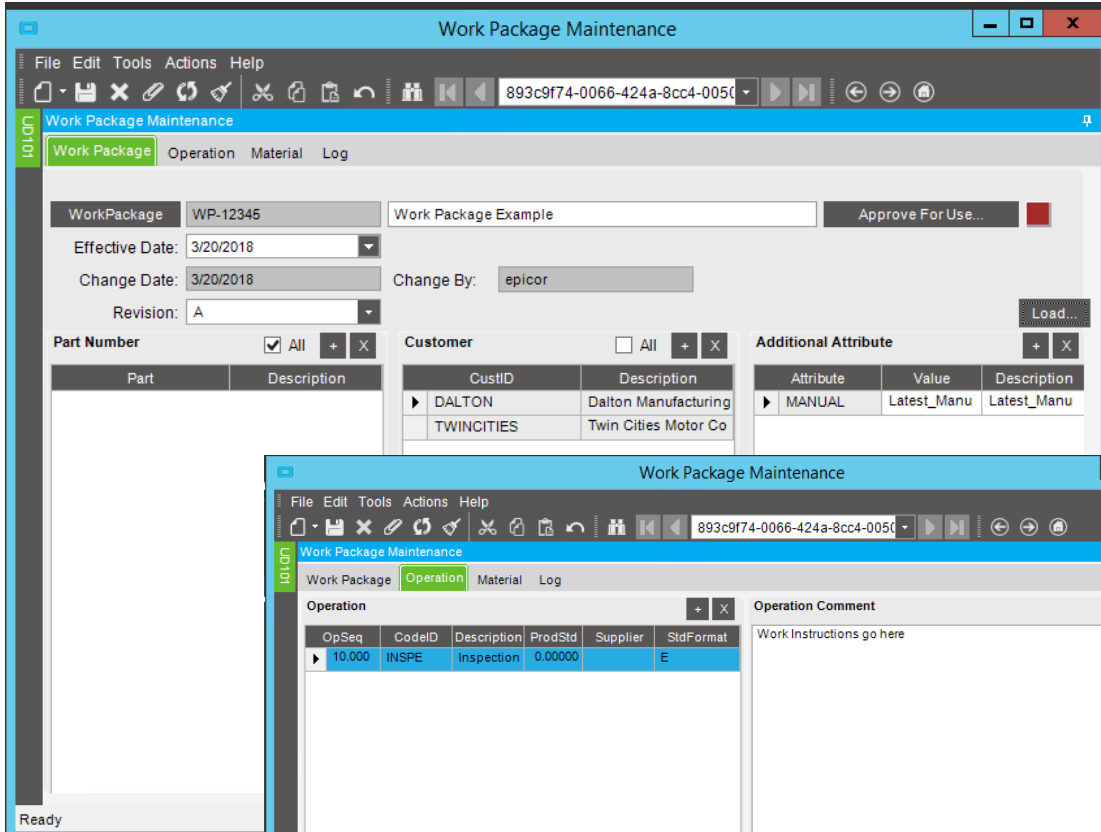
- Ability to receive Customer Owned material into stock or directly onto a job reduces time to release to the shop floor.



# OUR MRO SOLUTION FOR AEROSPACE + DEFENSE INDUSTRY

## Pre-Approved Engineering for Repair and Overhaul

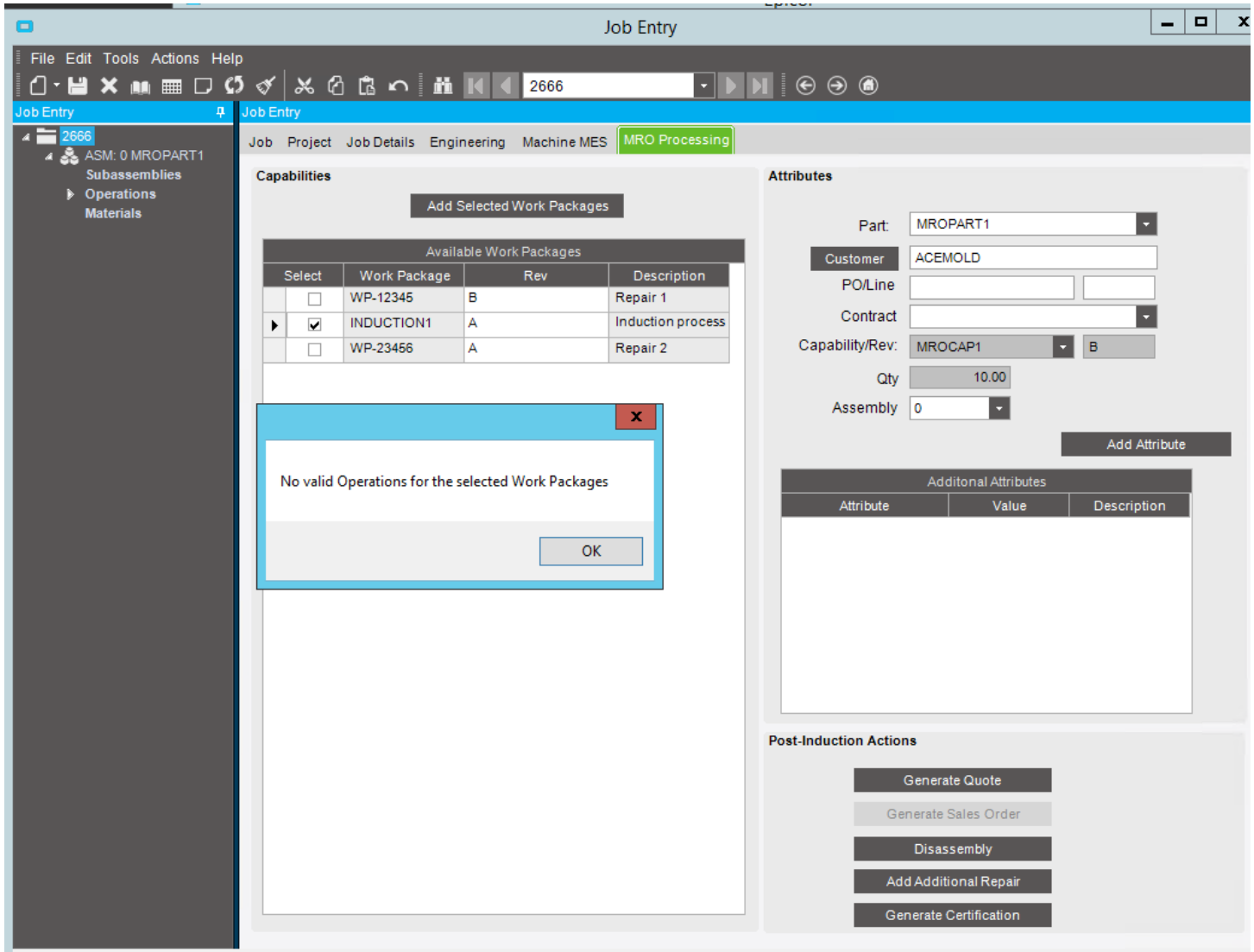
- Pre-approved engineering for repair or overhaul, with engineering further controlled by Customer, Part or Dynamic Attributes reduces the time to release the work to the shop floor.



# OUR MRO SOLUTION FOR AEROSPACE + DEFENSE INDUSTRY

## Repair Or Overhaul Routings

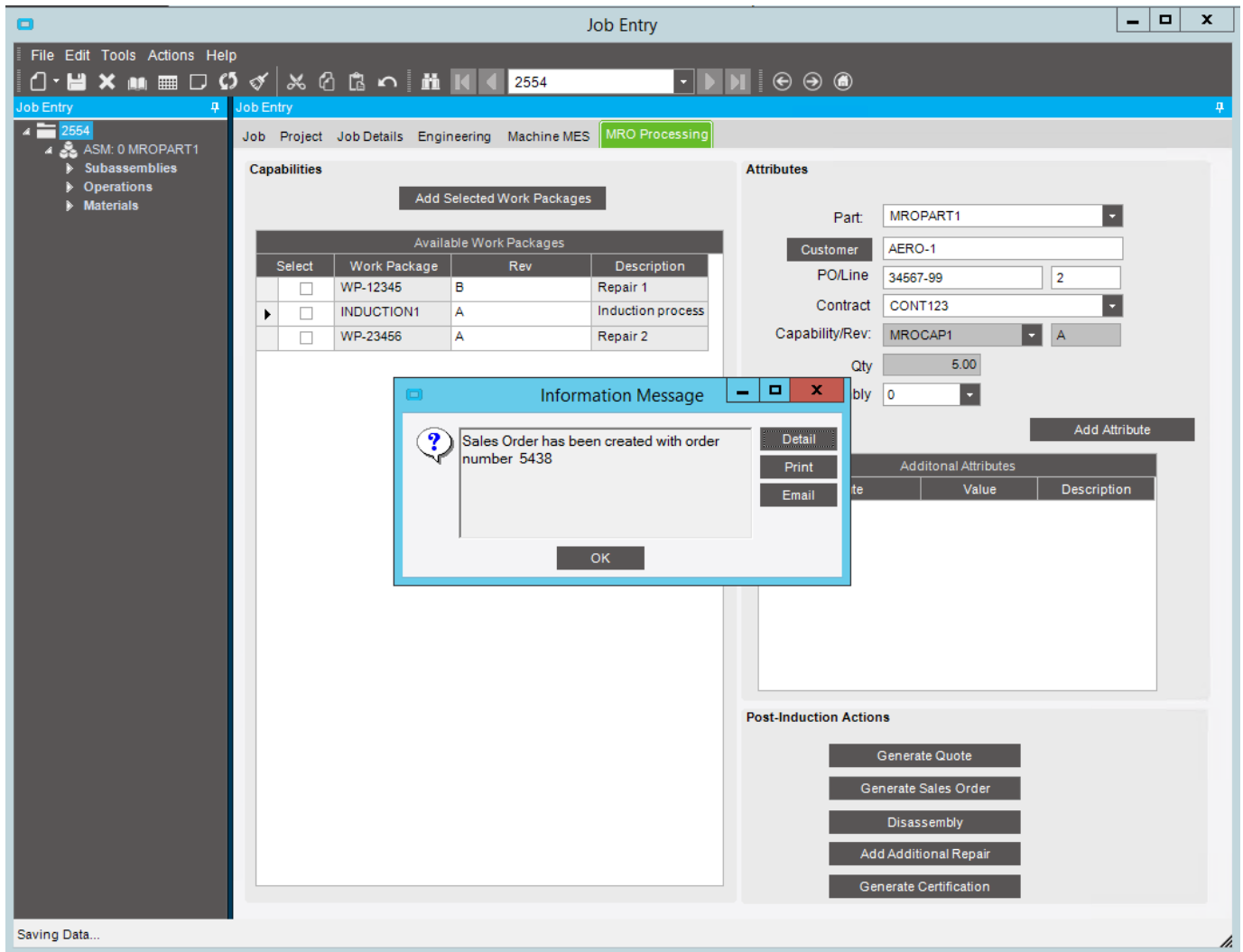
- A system for adding repair or overhaul routings to the job after incoming inspection has been completed, that minimizes the possibility of error, supports traceability and minimizes costs.



## OUR MRO SOLUTION FOR AEROSPACE + DEFENSE INDUSTRY

### Generate A Quote Or Sales Order

- Ability to generate a quote or sales order based on the estimated cost of the specific repair or overhaul being performed, plus markup provides traceability and reduces manual interactions between the shop floor and Order Entry.



- Also available are rework / additional repair and disassembly all from the same form.

### Cre8tive Technology and Design

8787 Complex Dr., Suite #300  
San Diego, CA 92109

☎ 858.457.2786 | 📠 858.457.2787 | ✉ info@ctnd.com

Cre8tive Technology and Design is a leading provider of Epicor ERP. We utilize our extensive experience and ERP expertise to create customized solutions for businesses of all shapes and sizes. Trust our staff to deliver effective, industry-specific solutions on time and within budget.